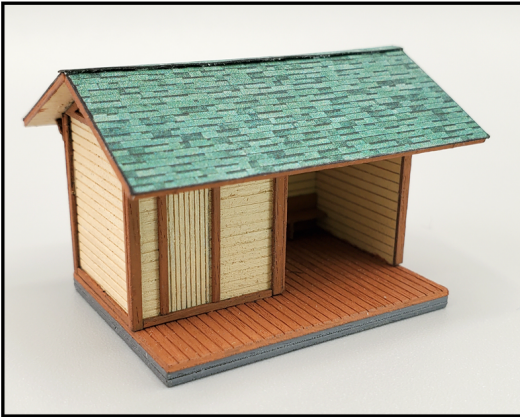




PASSENGER SHELTER

Finished Structure 1.25" x 1.5"

KIT SR-200
N SCALE



Early travel by rail prior to automobiles had small town stations and whistle stops to serve smaller communities. This simple structure would keep you dry while waiting for your train.

This easy to build laser kit is ideal for all levels of experience.

TOOLS:

This is a very simple and easy to assemble kit requiring very basic tools.

KNIFE: A standard hobby knife with several *new* #11 or similar blades to separate parts from the wood frets. Dull blades don't save time or money, but do add to frustration.

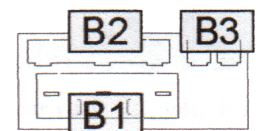
TWEEZERS: Fine point tweezers make applying small parts much easier.

PAINTS / STAINS: Choose your colors in advance and have them handy during assembly. Water based craft paints work well when applied in light coats to avoid warpage. Spraying the wood with a sealing clear coat before painting can help prevent warpage as well.

GLUE: Standard white or yellow wood glue works well here.

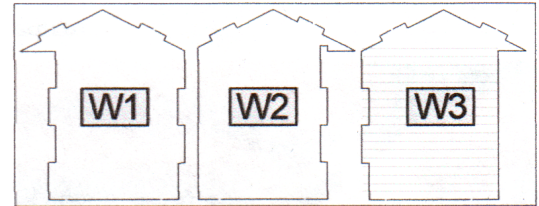
TOOTHPICKS: Simple wooden toothpicks are excellent glue applicators. Place a drop of glue on a piece of plastic like a soda bottle cap, then dip your toothpick into the puddle and use that to apply to the parts. **USE THE MINIMUM POSSIBLE.** These are tiny parts and don't take much glue. If the glue is squeezing out of joints, then that's too much. Very little glue is needed and will make for a cleaner and tighter assembly.

PARTS IDENTIFICATION

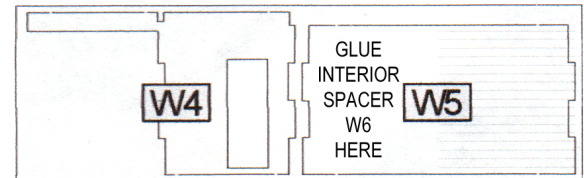


BENCH

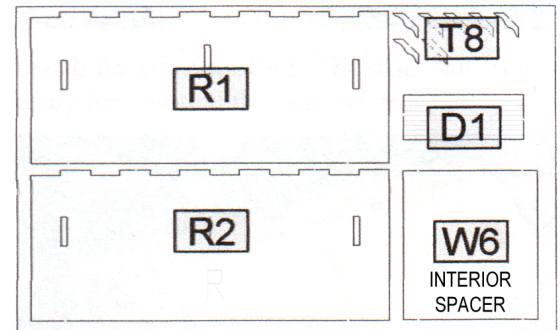
SHORT WALLS



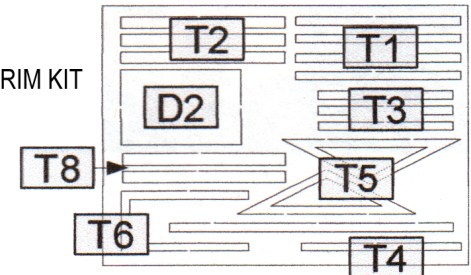
LONG WALLS



ROOF PANELS, DOOR, SPACER, AND EAVES TRIM

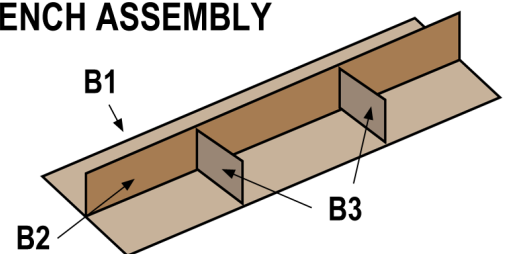


TRIM KIT



TRIM PARTS ARE SELF ADHESIVE

BENCH ASSEMBLY



Assemble and let dry. Paint in trim color or stain in wood tones.

MISSING PARTS OR NEED ASSISTANCE? CONTACT US!
info@mfcclaser.com / www.mfcclaser.com

MAIN BODY:

Attach W1 end wall to W5 back wall. Glue joints take a couple of minutes to cure. Use a minimum of glue to avoid any squeezing out of joints. If it does, a damp paper towel will clean up any excess.

Glue W6 spacer to the inside of the W1 to W5 corner.

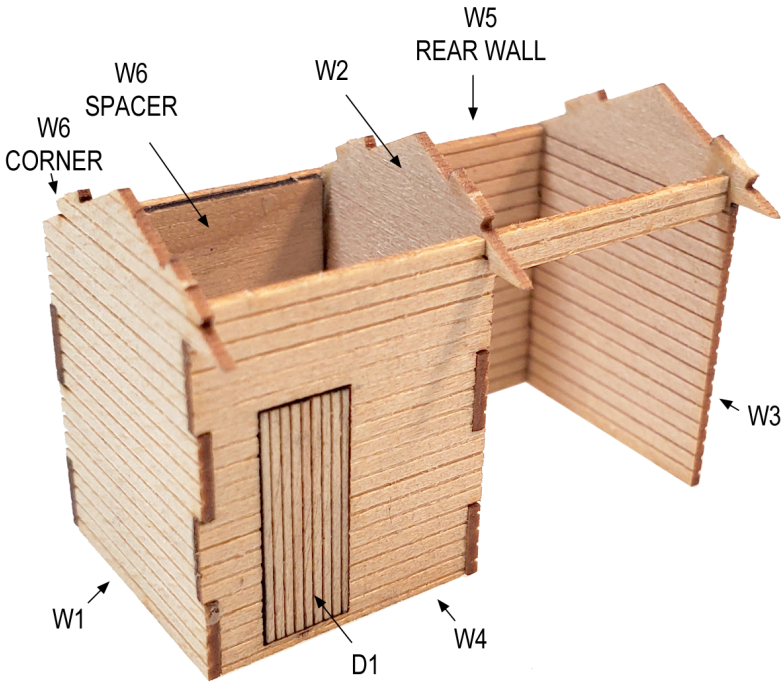
W2 center is glued to the right side edge of W6. It will be fiddly but will be reinforced in the next step.

Glue W4 front wall across the open end of W1 and W2. A square or similar will help greatly to keep the corners aligned while the glue dries.

Roof panels R1 and R2 can be attached with glue at this point. They will lock the structure together ensuring perfect alignment.

This is a good time to paint the main structure and trim parts. Use several light coats to avoid warpage.

Door D1 can be attached to the self adhesive D2 back panel and inserted into the opening from the rear.



ROOF SHINGLES

Photo Realistic self adhesive shingle paper is provided to apply to the roof panels. Turn the model upside down and use a knife to trim the shingles even to the roof.

A center ridge cap is included to cover the top center seam. Use a fingernail or blunt tool to emboss in place.

TRIM

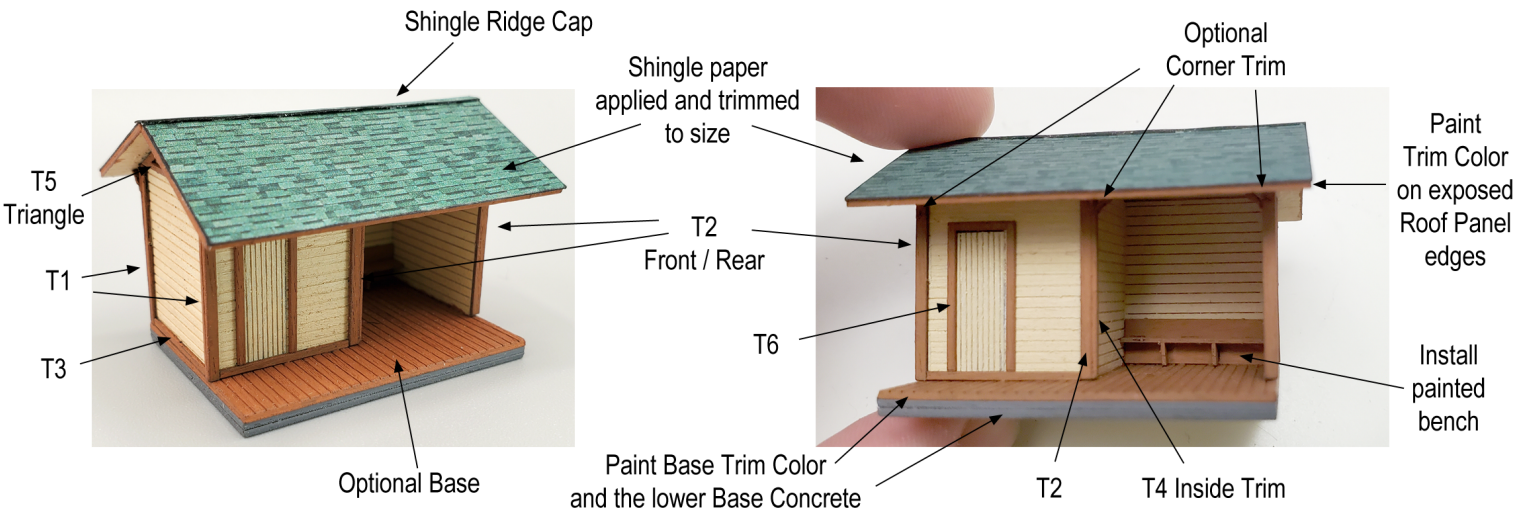
The trim is self adhesive and can be painted then applied to the structure where listed. The end triangle pieces work best to installed first, followed by the corner trim. **NOTE:** T1 is narrower and used on end walls. Apply this first, then follow with T2, the front and back wall trim corners.

FINAL DETAILS

Corner Trim T8 can be added to the each corner and the corner at T4.

Glue the painted wood bench in place.

CONGRATULTIONS! ASSEMBLY COMPLETE!



OPTIONAL: Some shelters rested directly on a gravel or dirt base, while others were supported by a wood platform. A scribed platform and lower base has been included in this kit to be added by modeler's choice.